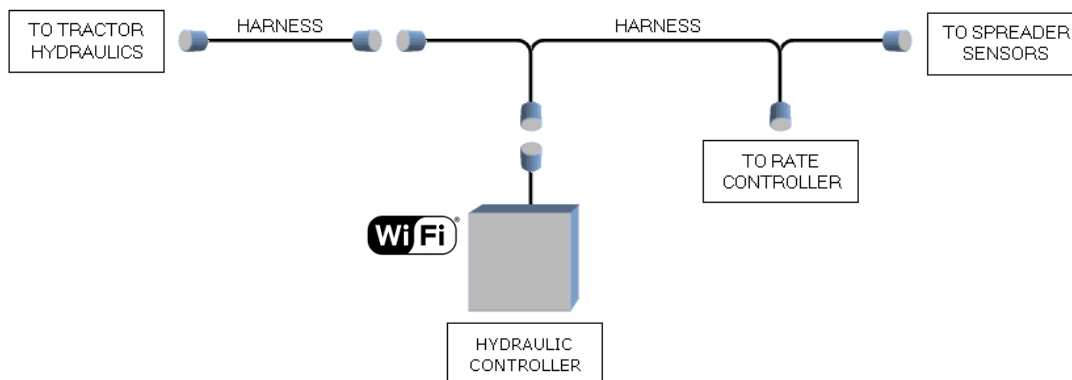


RATEX AUTO HYDRAULICS – CAB REAR CONNECT DRY RC

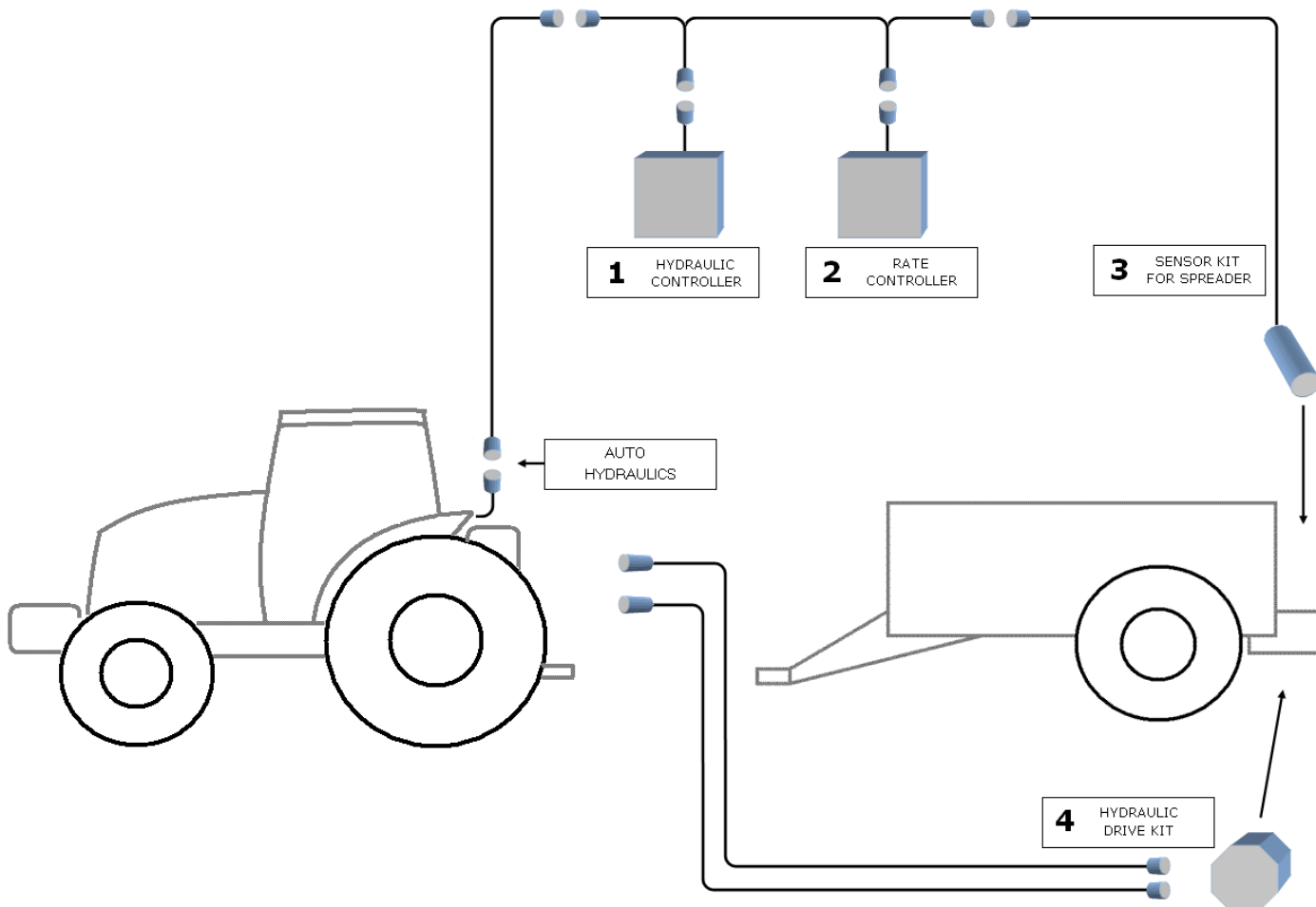
KIT COMPONENTS

- Hydraulic Controller
- Wiring harness



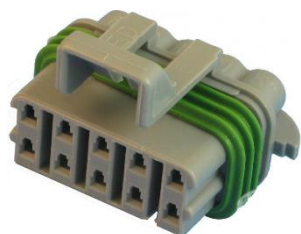
OVERVIEW

- Allows your existing rate controller to take command of the tractor hydraulics
- Hydraulic controller has internal WIFI for settings and status info
- Basic install shown below
- Controllers can be mounted on the Tractor or on the Spreader



INSTALL AND CONNECT TO TRACTOR

- Key off
- Mount the controllers on the tractor or spreader
- Connect the harness to both controllers and the spreader sensors
- Connect the harness to the Auto Hydraulics Connector at the bottom rear of the cab, shown below

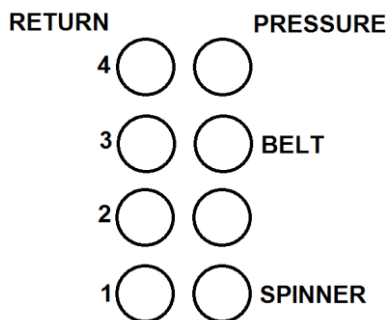


AUTO CONNECTOR



HYDRAULIC HOOKUP

- Connect belt hoses to remote no3 (pressure hose in the right hand coupler)
- Connect spinner hoses to remote no 1 (pressure hose in the right hand coupler)
- Pushing the levers forward will run the belt or spinners



TRACTOR HYDRAULIC SETTINGS

- Set max hydraulic flow on the tractor to approx 80% (on the remote for the belt)
- Enable the auto mode setting for each SCV
- The remote must be clicked forward into detent to activate the AUTO mode (not all the way to float)



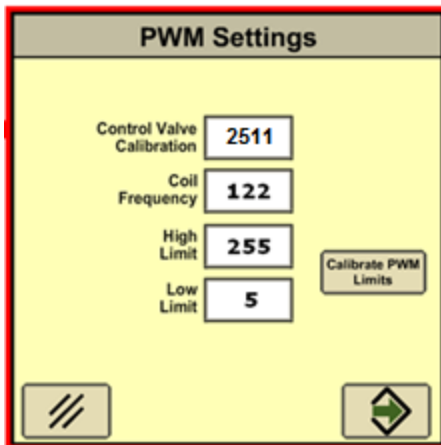
RATEX SETUP

The controller has an internal WIFI webserver. You can use any phone/tablet/laptop to setup the controller. Controllers are setup before shipping, you don't need to do this procedure.

- Tractor key on
- Search for WIFI hotspots on your mobile device
- Connect to the WIFI point called TRACTOR
- Open your web browser and access the website <http://tractor.com>
- Follow the instructions on the screen

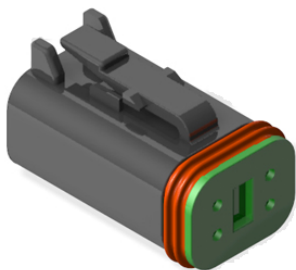
DRY RATE CONTROLLER SETUP EXAMPLE

- Enter all the required bin and product settings
- Select valve type as PWM CLOSE
- Enter settings shown below
- The CONTROL VALVE CALIBRATION number above should be fine-tuned for best performance

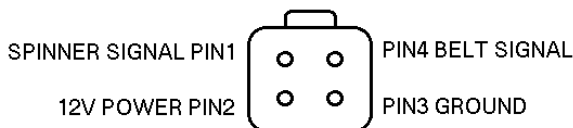


WIRING INFORMATION

- Standard harnesses are wired for PWM Positive inputs
- The Ratex hydraulic controller should be set to PWM
- PWM wiring from Rate controller:
Red=12volt, Black=Ground, Yellow=PWM Belt, White=PWM Spinners
- Optional REG or Servo Valve wiring from Rate controller:
Red=12volt, Black=Ground, Brown=Master on/off, Yellow=Increase, White=Decrease
- 4Pin deutsch connector below goes to the sensors on the spreader



LOOKING AT FEMALE PINS



All brands, product names, company names, trademarks referred to herein, are the property of their respective trademark holders. Use of them does not imply any affiliation with, or endorsement by them.