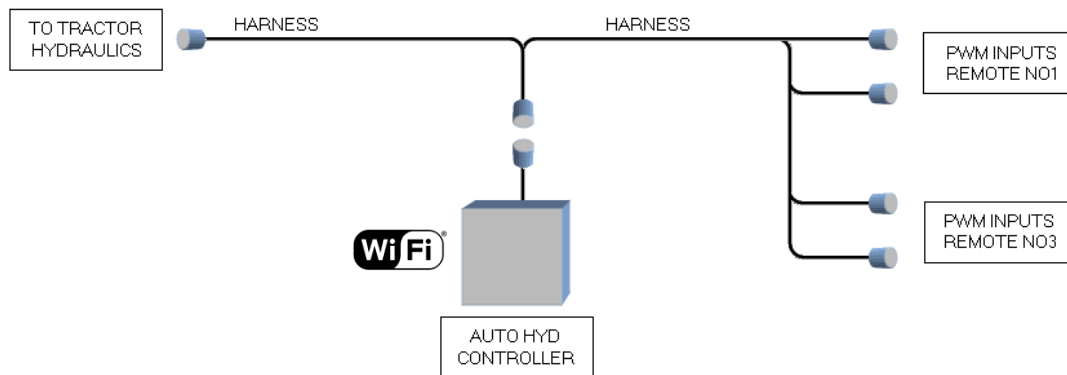


**RATEX AUTO HYDRAULICS – PROPORTIONAL DIRECTION INTERFACE
FOR USE WITH PWM POSITION CONTROLLED IMPLEMENTS**

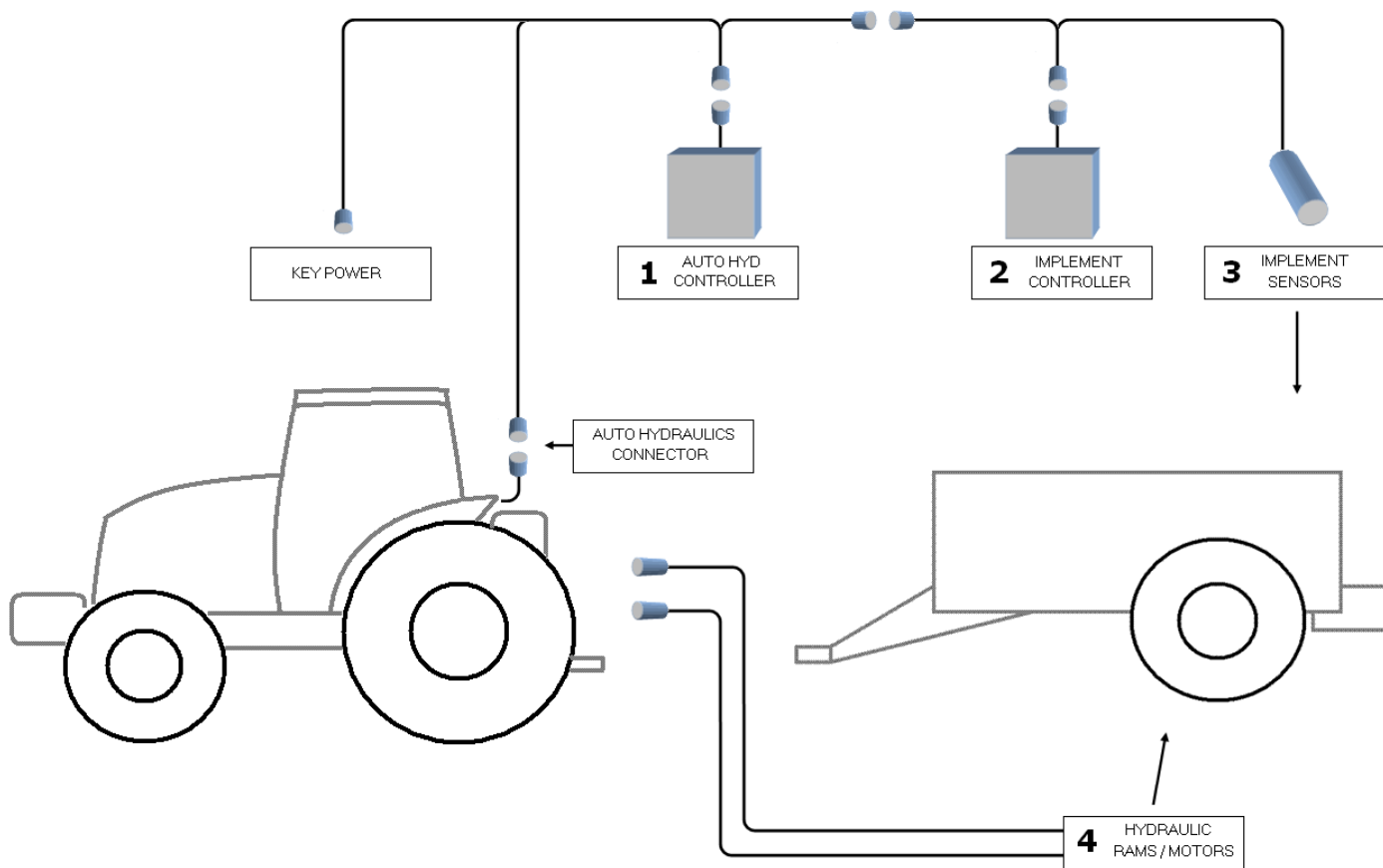
KIT COMPONENTS

- Hydraulic Controller
- Wiring harness



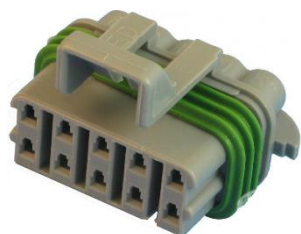
OVERVIEW

- Allows your existing implement controller to take command of the tractor hydraulics
- Hydraulic controller has internal WIFI for settings and status info
- Basic install shown below
- Controllers can be mounted on the Tractor or on the Implement



INSTALL AND CONNECT TO TRACTOR

- Key off and battery isolator off (this prevents tractor fault codes)
- Mount the controllers
- Connect the harness to the pwm valve connectors
- Connect the power supply branch to a fused 12volt key power
- Connect the harness to the Auto Hydraulics Connector at the bottom rear of the cab, shown below



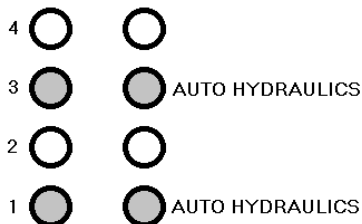
AUTO CONNECTOR



HYDRAULIC HOOKUP

- Tractor manufacturers allow auto control on remote no1 and no3 only, this is for convenience reasons when operating dual scrapers with auto cutting edge control, this cannot be changed
- Connect the implement hoses to remote no1 and/or remote no3

HYDRAULIC REMOTES



TRACTOR HYDRAULIC SETTINGS

- Set your desired max hydraulic flow for each remote
- Enable the auto mode setting for each SCV
- The remote must be clicked forward into detent to activate the AUTO mode (not all the way to float)



RATEX SETUP

Controllers are setup before shipping, you don't need to do this procedure. The controller has an internal WIFI webserver. You can use any phone/tablet/laptop with Chrome or Safari browser.

- Power on, wait for boot up
- Search for WIFI hotspots on your mobile device
- Connect to the WIFI point called MACHINE WIFI
- Open your web browser, type in the address bar: home.page
- Some devices are stupid, if it doesn't work try these: www.home.page or http://192.168.50.50/
- A webpage will open up, just follow the instructions on the screen

ADDITIONAL INFORMATION

- PWM inputs are built to suit 12volt Positive Switching Drivers
- The controller can accept a PWM frequency from 50Hz to 250Hz (factory setting is 100Hz)
- Other settings are available to fine tune hydraulic control
- The controller has multi boot stages when it is powered on
- The auto hydraulics functions boot almost instantly, so you can begin working
- The WIFI server and web pages take approx 40seconds to boot

All brands, product names, company names, trademarks referred to herein, are the property of their respective trademark holders. Use of them does not imply any affiliation with, or endorsement by them.