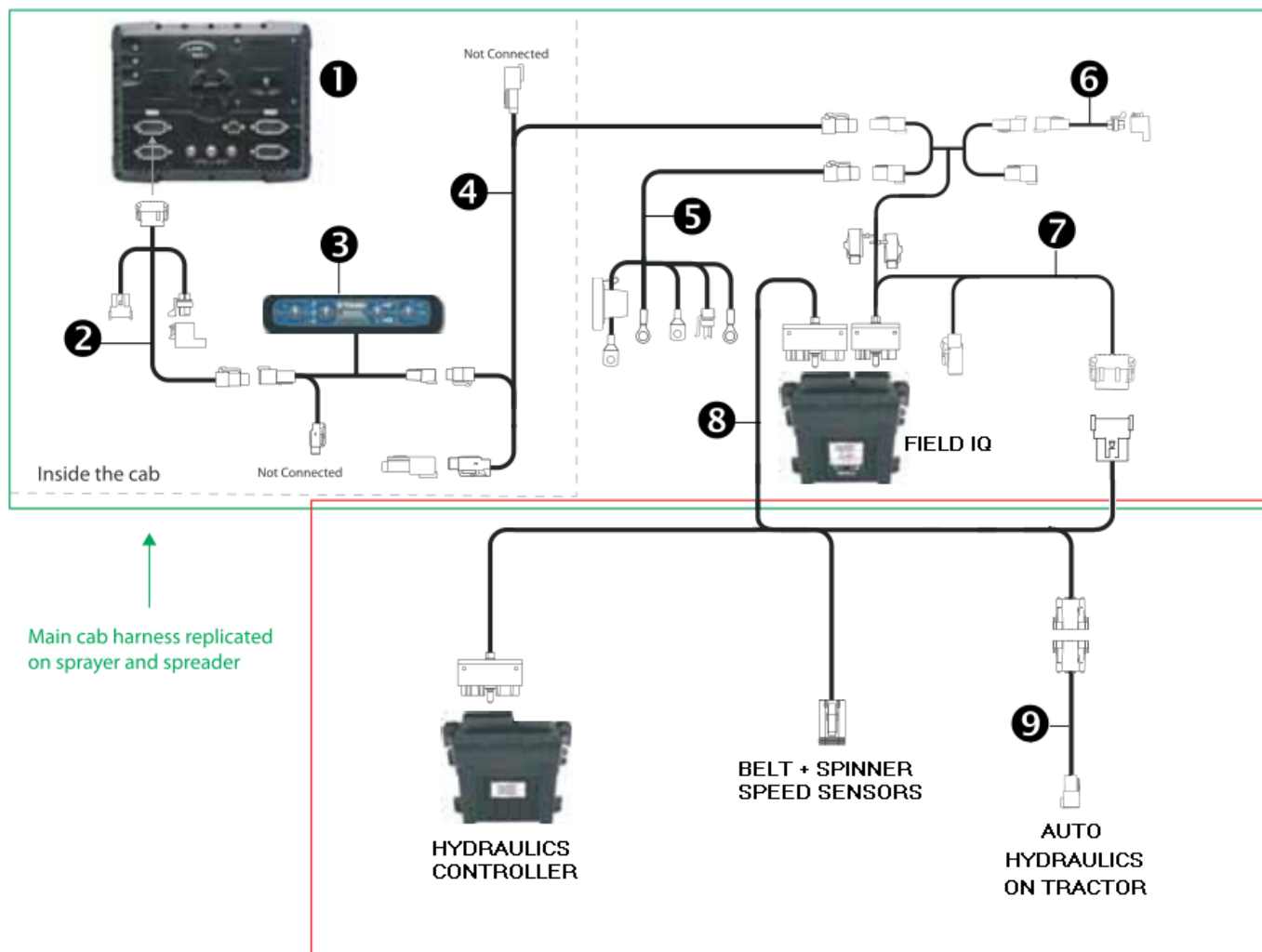


FIELD IQ INFORMATION

Harness number 8 is supplied with the Ratex Hydraulic Controller.
 Harness number 9 is supplied for Case and New Holland tractors.
 All other harnesses are dealer supplied.

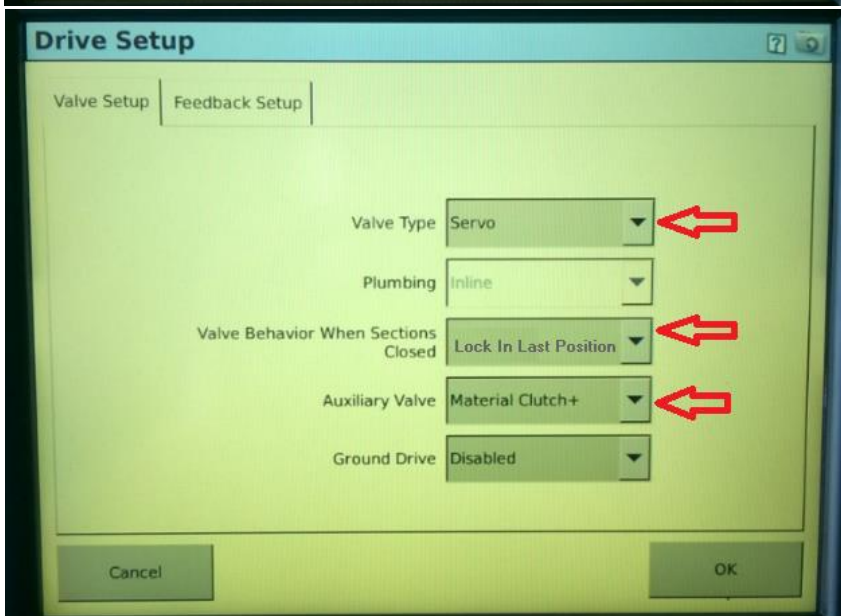
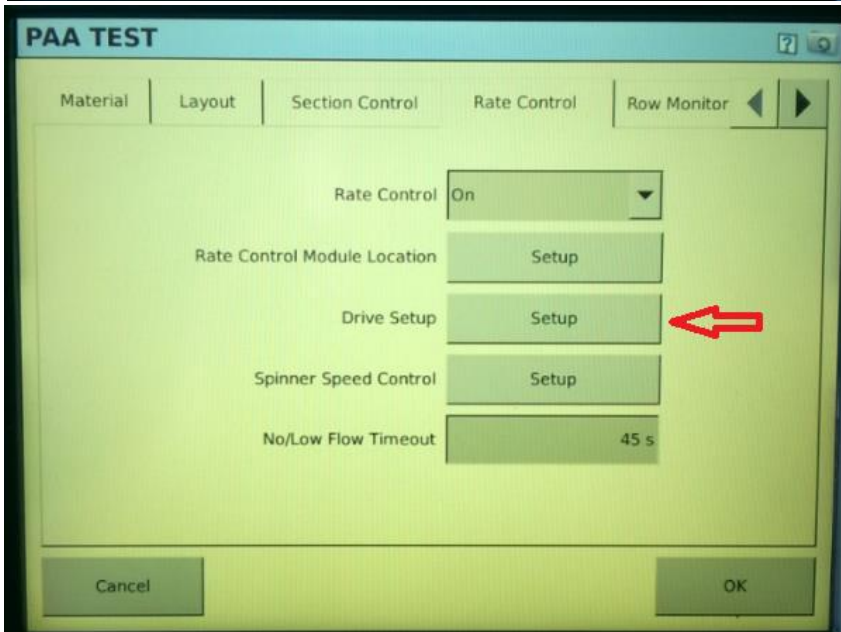
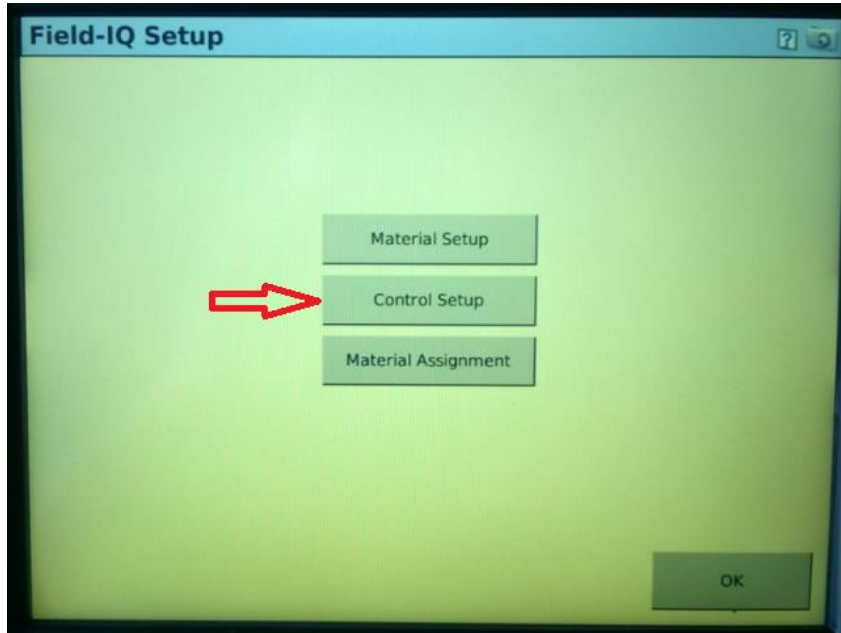


| Item | Description | Trimble part number |
|------|---------------------------------------|---------------------|
| ① | FmX integrated display | 93100-01 |
| ② | Display to Field-IQ cable | 75834 |
| ③ | Field-IQ master switch box | 75050-01 |
| ④ | Cab to hitch CAN cable | 77368 |
| ⑤ | Power to cab cable | 76941 |
| ⑥ | Field-IQ implement terminator adapter | 75529 |
| ⑦ | Power/CANbus harness | 75526 |

All brands, product names, company names, trademarks referred to herein, are the property of their respective trademark holders. Use of them does not imply any affiliation with, or endorsement by them.

HYDRAULIC VALVE SETUP

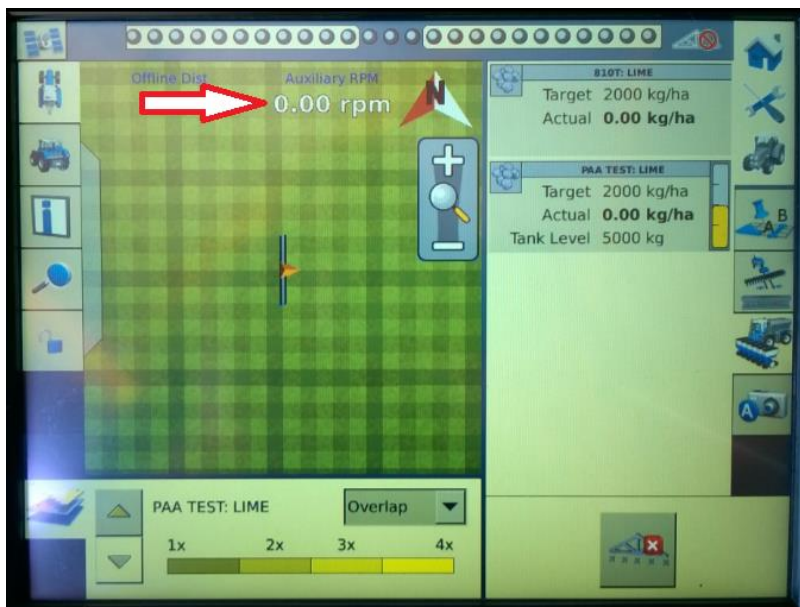
The Ratex hydraulic controller requires a SERVO VALVE SIGNAL and a MATERIAL CLUTCH SIGNAL.



OPTIONAL SPINNER SPEED READOUT

This will put an AUX sensor readout on the run page.

SENSORS TAB > ADD SENSOR > TYPE RPM > NAME SPINNER SPEED > SELECT FIQ SERIAL NUMBER



Valve and Sensor Diagnostics:

